



Project _____
 Item _____
 Quantity _____
 FCSI Section _____
 Approval _____
 Date _____

COOK/CHILL VERTICAL TUMBLE CHILLERS

MODELS: P-TC-220
 P-TC-320

Cleveland Standard Features

- Load capacity for up to 220 or 320 gallons of packaged product.
- All stainless steel construction throughout
- Touch screen user interface for:
 - Start/Stop
 - Chill Cycle rotation
 - Oscillation mode
 - Cleaning cycle
 - Digital temperature display
 - 99-minute digital countdown timer
 - Cycle completion light
- Fully-insulated, large stainless steel, perforated rotating drum
 51" or 65" diameter by 43" long, driven by a Eurodrive motor at 7 RPM.
- Heavy-duty front loading door with water tight seal and automatic safety lock.
- Angled loading chute.
- Full drum rotation or oscillation mode for delicate products.
- Pre-piped, efficient built-in "plate type heat-exchanger" with back-flush cleaning feature.
- Pre-piped, built-in 1 1/2 HP water circulation pump.
- Large in-line basket strainer for chilled water loop to protect heat-exchanger.
- Automatic water fill with level settings for full and half product load.
- Air powered solenoid valves.
- Automatic dispenser for sanitizing solution.
- Hot water connection for drum cleaning (No steam hookup required).
- Pre-piped for single point connections to utilities.
- Available with left or right hand operating controls.
- Accepted for use in USDA inspected facilities.

Options & Accessories

- Stainless steel chilled water re-use tank, mounted on top of machine for space savings.
- Product landing table
- Conveyor for automatic product loading
- Right hand controls (left hand door hinge)
- Ice Builders

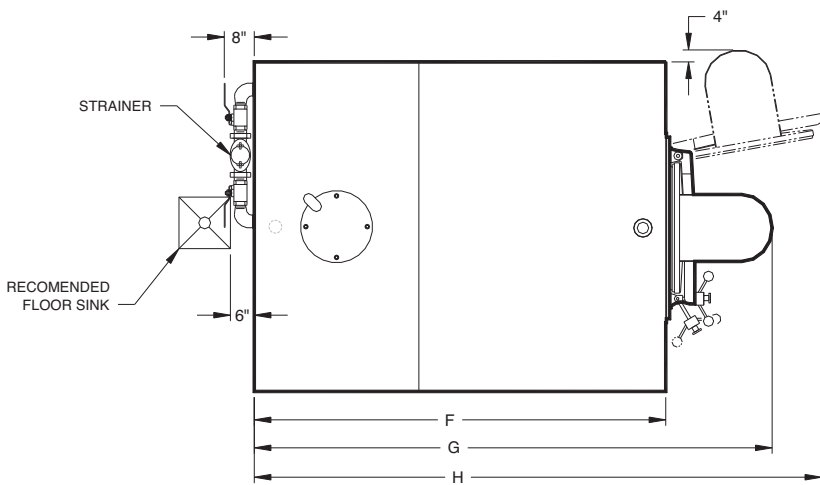


Model P-TC-220 shown with optional Re-use Tank

Short Form Specifications

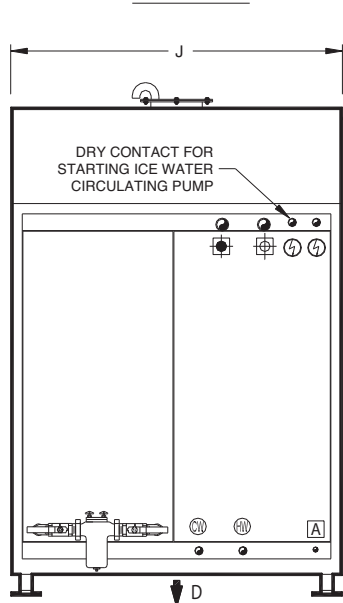
Shall be CLEVELAND Model P-TC-____, **COOK/CHILL VERTICAL TUMBLE CHILLER**; All stainless steel construction; capacity for up to ____ gallons of product load; fully-insulated ____" diameter by 43" long perforated drum; built-in plate heat-exchanger; automatic dispenser for sanitizing solution; solid state controls for full drum rotation; oscillation mode; cleaning cycle; digital temperature display; countdown timer; two water level set points; hot water for cleaning. (No steam hook-up required.)

- Condensing Units for Ice Builders
- Ice Water Control Panel
- Lockable cover over controls
- Chart Recorder
- Flow Meter for chilled water loop
- Large Size Strainer

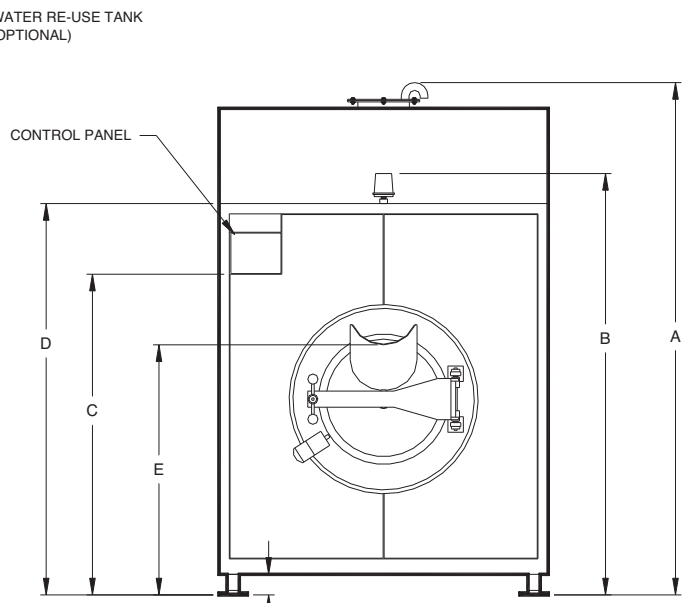


PLAN VIEW

MINIMUM CLEARANCE	
FRONT	60"
REAR	24"
SIDE*	12"
* 36" for electrical access on one side	



BACK VIEW



FRONT VIEW

SPECIFY LEFT OR RIGHT HAND DOOR HINGING

DIMENSIONS

MODEL	A	B	C	D	E	F	G	H	J
P-TC-220	98"	84"	63"	77"	53 1/2"	82"	107"	115"	64"
P-TC-320	109"	95"	63"	88"	62"	90"	116"	131"	80"

UTILITY CONNECTIONS

MODEL	CHILLED WATER INLET	CHILLED WATER RETURN	COLD WATER	HOT WATER	AIR INLET	DRAIN	ELEC-TRICAL
						D	208V/3PH/60Hz
P-TC-220	1 1/2" NPT 75 GPM	1 1/2" NPT	1" NPT 30 GPM	1" NPT 30 GPM	1/2" NPT 1 CFM/65 PSI	1 1/2" NPT 30 GPM	17 AMPS
P-TC-320	2" NPT 80 GPM	2" NPT	1" NPT 30 GPM	1" NPT 30 GPM	1/2" NPT 1 CFM/65 PSI	2" NPT 30 GPM	28 AMPS

NOTE: The pressure drop is 12 to 15 PSI for the chilled water passing through the tumble chiller.